



Product information

Product	RM 270	Date	2008-06-10
Code	PMK2, EP24VMK2, P5MK2	Consecutive No	0127
Priority	Normal	Author	Fredrik Martinsson

New edition P and EP spool controls

As from May/June 2008 the pneumatic- and electro-pneumatic spool controls for RM 270 will be of new upgraded editions. The new editions have new codes and Part No's. Earlier editions will be obsolete.

Identification

It might be difficult to separate the new editions from the previous. The new spool controls are made from machined components, earlier editions has had die-cast parts.

One small but specific detail is: that on the previous version bolt and nut was used to hold the cylinders parts exterior components together. On the new edition the nut is replaced by threads in mating component.

The total length of the spool controls has increased with 10mm's although the dimension between pneumatic ports (x, y) will remain the same. The appearance of the new edition (PMK2, EP24VMK2, P5MK2) can be seen in page 2.

Interchangeability

Because of the 10 mm increase in length there can be some interchangeability incompatibility in extremely tight built in applications, but in general cases the new editions are fully interchangeable with previous edition.

Effect on related components

No effect on related components. Interface towards valve housing and spool are the same as the previous edition.

Actions

Affected valve specifications will be updated, from earlier- to new edition of P and EP spool controls, with no change in part No for complete valve.

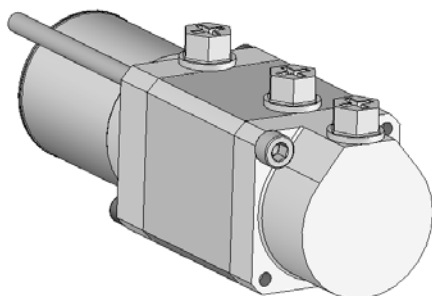
- * P will be changed to PMK2
- * EP24V will be changed to EP24VMK2
- * P5 will be changed to P5MK2.



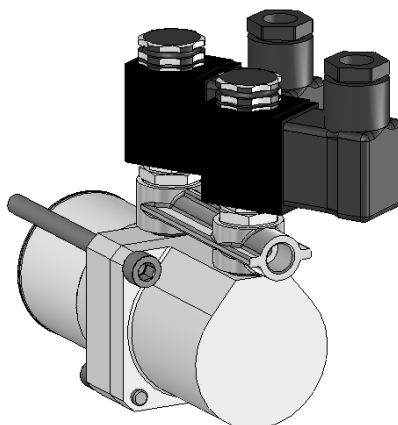
Product information

Product	RM 270	Date	2008-06-10
Code	PMK2, EP24VMK2, P5MK2	Consecutive No	0127
Priority	Normal	Author	Fredrik Martinsson

P5MK



EP24MK2



PMK2

